

### Weave Pole List for 6 poles (that can be converted to 3 sets of 2x2's)

3/4" PVC Schedule 40 Pipe - 432" total (4- 10' pipes)

12 - 3/4" end caps

2 - 3/4" 3 way fittings

4 - 3/4" 4 way fittings

2 - 3/4" joiner (pvc coupling) pieces for 2x2's

Red spray paint (plus tape/newspaper for painting)

PVC cutters

PVC Cement

Bring PVC cutters, sharpie and measuring tape to the hardware store if your car is not long enough to hold the intact PVC pipes (10 feet long) and make some of the 24" cuts in the parking lot so that it will fit in your car

If you don't want to glue these, buy furniture grade fittings to easily slide pvc on and off

Cuts:

3 - 24" cuts

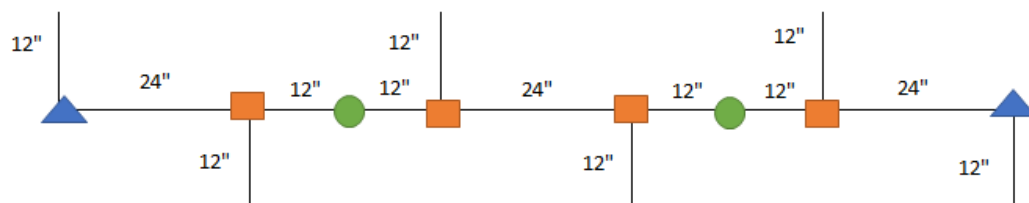
10 - 12" cuts

6 - 36" cuts (for the weave poles themselves)

Glue all pieces together for stability EXCEPT for your weave poles and the joiner/coupler pieces. If the joiner/coupling pieces cannot come apart the poles won't be able to be 2x2. I left my weave poles unglued so that I could break down the poles for traveling purposes 😊

I would recommend a no slide strip on the base between the poles. PVC is super slippery and if they step on it will cause injury, especially since these are taller than 1/2"

Weave Pole Design Diagram



● Coupling

▲ 3-Way (include Weave Pole)

■ 4-Way (include Weave Pole)

3 - 24" PVC Cuts

10 - 12" PVC Cuts (6 - Stabilizer Feet and 4 - Coupling Feet)

6 - 36" PVC Cuts (for weave poles)





It's too dark to test  
these out but WOW IM  
HAPPY, I MADE these.  
With my HNADS